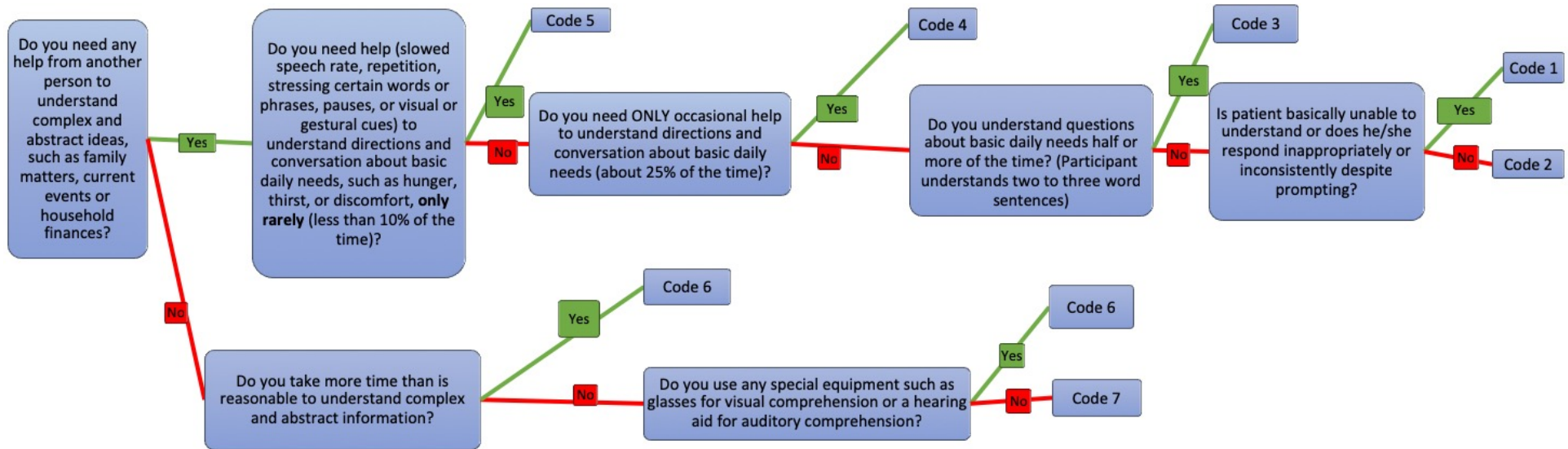
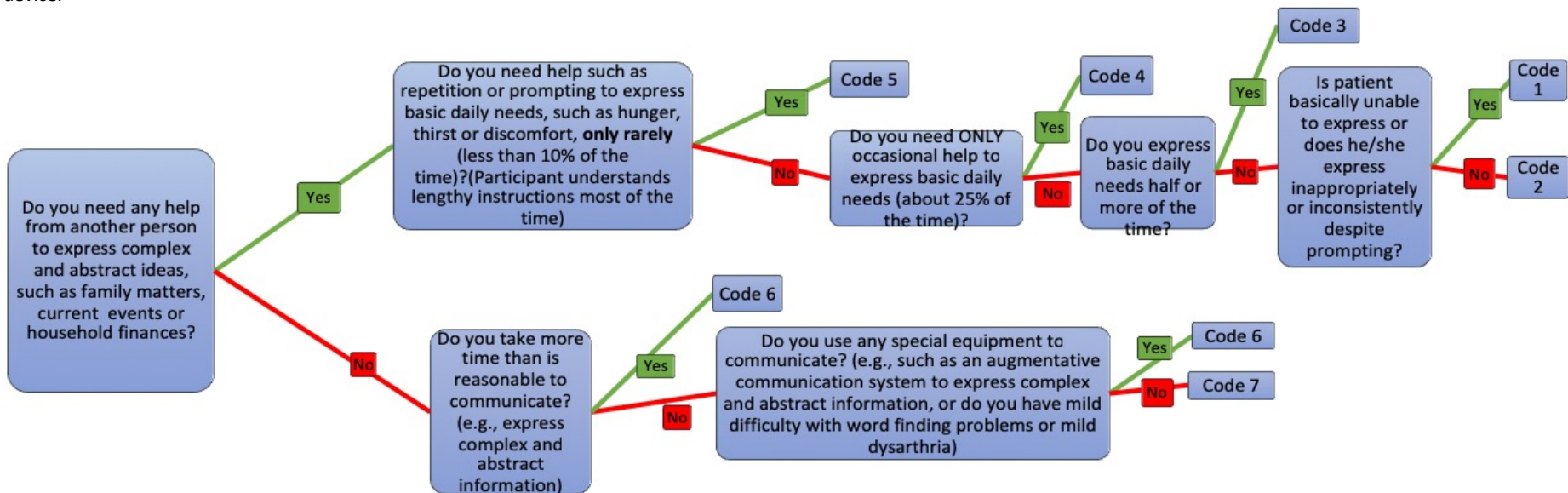


## FIM Decision Rule

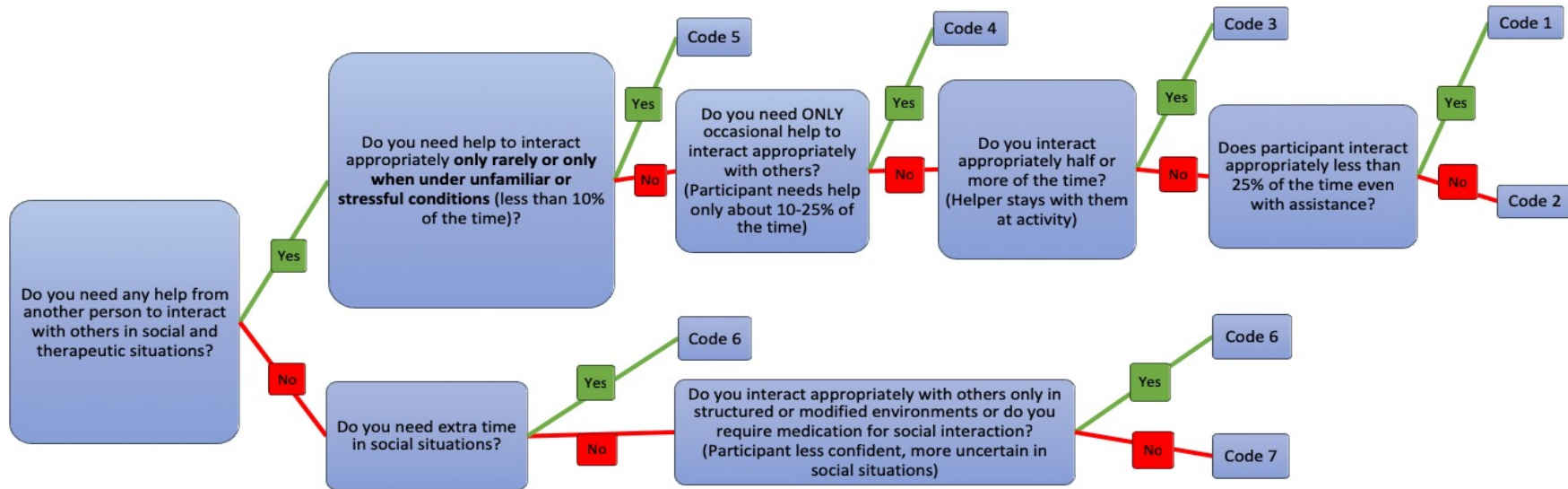
**Comprehension:** Comprehension of *complex or abstract information* includes (but is not limited to ) understanding current events appearing in television programs or newspaper articles, or abstract information on subjects such as religion, humor, math, or finances used in daily living. It may also include understanding information given during a group conversation. Information about *basic daily needs* refers to conversation, directions, and questions or statements related to the subject's need for nutrition, fluids, elimination, hygiene or sleep (physiological needs).



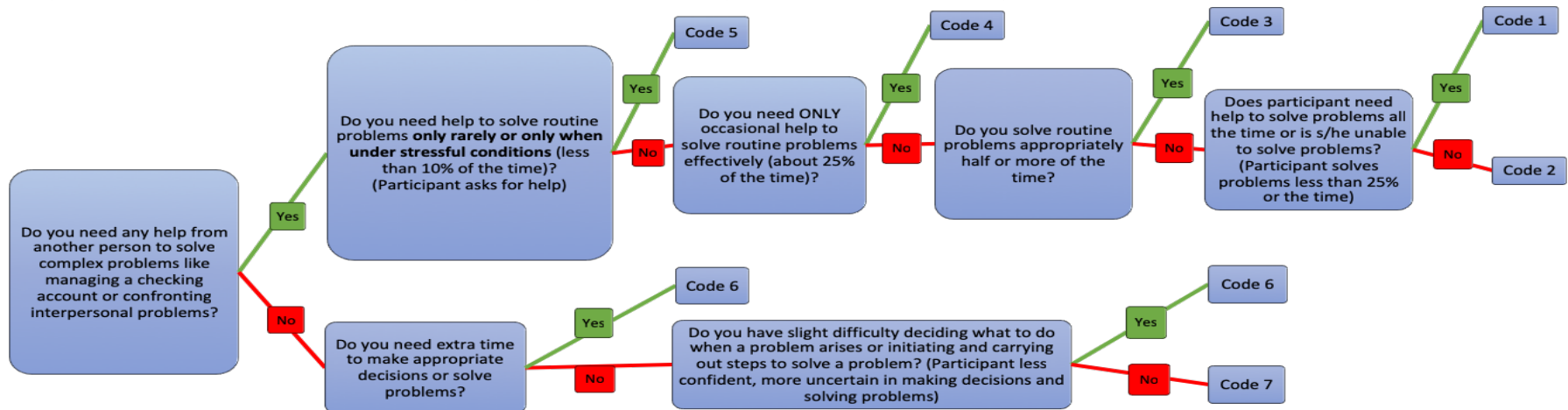
**Expression:** Expression includes clear vocal or non-vocal expression of language. This item includes either intelligible speech or clear expression of language using writing or a communication device.



**Social Interaction:** Social Interaction includes skills related to getting along and participating with others in therapeutic and social situations. It represents how one deals with one's own needs together with the needs of others. Examples of socially inappropriate behaviors include temper tantrums; loud, foul, or abusive language; excessive laughing or crying; physical attack; or very withdrawn or non-interactive behavior.



**Problem Solving:** Problem solving includes skills related to solving problems of daily living. This means making reasonable, safe, and timely decisions regarding financial, social and personal affairs, as well as the initiation, sequencing, and self-correcting tasks and activities to solve problems.



**Memory:** Memory includes daily activities in an institutional or community setting. It includes the ability to store and retrieve information, particularly verbal and visual. The functional evidence of memory includes recognizing people frequently encountered, remembering daily routines, and executing requests without being reminded. A deficit in memory impairs learning as well as performance of tasks.

